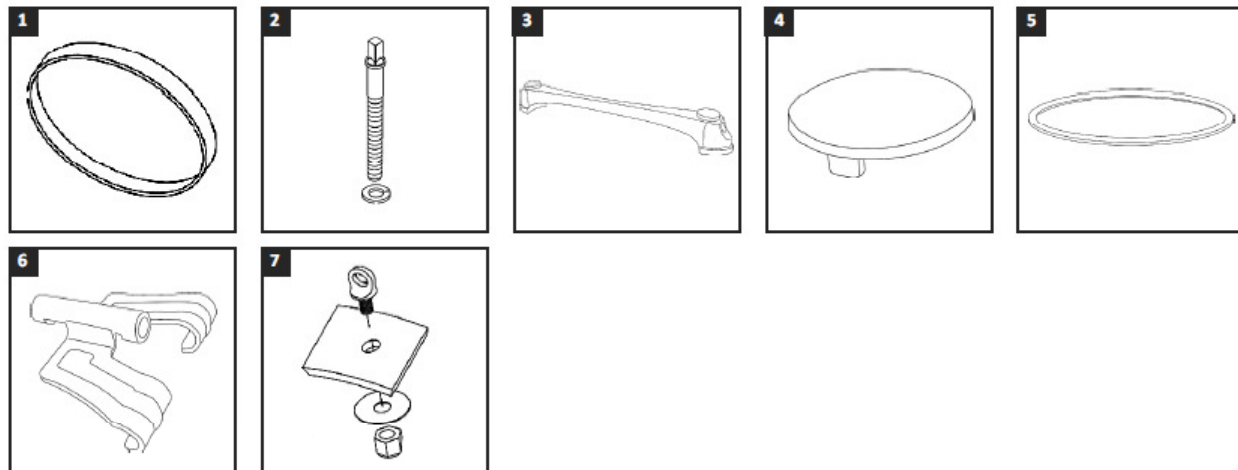


# REVOLUTION SERIES

## Revolution Series Bass Drums

| Size      | Type      | Code         | Drumheads                  | Code            |
|-----------|-----------|--------------|----------------------------|-----------------|
| 16" x 14" | Bass Drum | <b>38416</b> | 16" Everplay Marching Bass | <b>8E1916NP</b> |
| 18" x 14" | Bass Drum | <b>38418</b> | 18" Everplay Marching Bass | <b>8E1918NP</b> |
| 20" x 14" | Bass Drum | <b>38420</b> | 20" Everplay Marching Bass | <b>8E1920NP</b> |
| 22" x 14" | Bass Drum | <b>38422</b> | 22" Everplay Marching Bass | <b>8E1922NP</b> |
| 24" x 14" | Bass Drum | <b>38424</b> | 24" Everplay Marching Bass | <b>8E1924NP</b> |
| 26" x 14" | Bass Drum | <b>38426</b> | 26" Everplay Marching Bass | <b>8E1926NP</b> |
| 28" x 14" | Bass Drum | <b>38428</b> | 28" Everplay Marching Bass | <b>8E1928NP</b> |
| 30" x 16" | Bass Drum | <b>38630</b> | 30" Everplay Marching Bass | <b>8E1930NP</b> |
| 32" x 16" | Bass Drum | <b>38632</b> | 32" Everplay Marching Bass | <b>8E1932NP</b> |



| Ref | Part No  | Description                 | Quantity per Pack | Quantity per Drum |     |     |     |     |     |     |     |     |    |
|-----|----------|-----------------------------|-------------------|-------------------|-----|-----|-----|-----|-----|-----|-----|-----|----|
|     |          |                             |                   | 16"               | 18" | 20" | 22" | 24" | 26" | 28" | 30" | 32" |    |
| 1   | 16/56    | Marching 16" Bass Drum Hoop | 1                 | 2                 | -   | -   | -   | -   | -   | -   | -   | -   | -  |
|     | 18/56    | Marching 18" Bass Drum Hoop | 1                 | -                 | 2   | -   | -   | -   | -   | -   | -   | -   | -  |
|     | 20/56    | Marching 20" Bass Drum Hoop | 1                 | -                 | -   | 2   | -   | -   | -   | -   | -   | -   | -  |
|     | 22/56    | Marching 22" Bass Drum Hoop | 1                 | -                 | -   | -   | 2   | -   | -   | -   | -   | -   | -  |
|     | 24/56    | Marching 24" Bass Drum Hoop | 1                 | -                 | -   | -   | -   | 2   | -   | -   | -   | -   | -  |
|     | 26/56    | Marching 26" Bass Drum Hoop | 1                 | -                 | -   | -   | -   | -   | 2   | -   | -   | -   | -  |
|     | 28/56    | Marching 28" Bass Drum Hoop | 1                 | -                 | -   | -   | -   | -   | -   | 2   | -   | -   | -  |
|     | 30/56    | Marching 30" Bass Drum Hoop | 1                 | -                 | -   | -   | -   | -   | -   | -   | 2   | -   | -  |
|     | 32/56    | Marching 32" Bass Drum Hoop | 1                 | -                 | -   | -   | -   | -   | -   | -   | -   | 2   | -  |
| 2   | 044275   | HT 125mm Tension Bolt       | 6                 | 16                | 16  | 20  | 20  | 20  | 20  | 20  | 20  | 20  | 20 |
| 3   | 38416/20 | Revolution Bass Drum Lug    | 2                 | 8                 | 8   | 10  | 10  | 10  | 10  | 10  | 10  | 10  | 10 |
| 4   | 38101/22 | Revolution Lug Cap          | 20                | 16                | 16  | 20  | 20  | 20  | 20  | 20  | 20  | 20  | 20 |
| 5   | 38100/16 | 16" Reinforcing Ring        | 1                 | 2                 | -   | -   | -   | -   | -   | -   | -   | -   | -  |
|     | 38100/18 | 18" Reinforcing Ring        | 1                 | -                 | 2   | -   | -   | -   | -   | -   | -   | -   | -  |
|     | 38100/20 | 20" Reinforcing Ring        | 1                 | -                 | -   | 2   | -   | -   | -   | -   | -   | -   | -  |
|     | 38100/22 | 22" Reinforcing Ring        | 1                 | -                 | -   | -   | 2   | -   | -   | -   | -   | -   | -  |
|     | 38100/24 | 24" Reinforcing Ring        | 1                 | -                 | -   | -   | -   | 2   | -   | -   | -   | -   | -  |
|     | 38100/26 | 26" Reinforcing Ring        | 1                 | -                 | -   | -   | -   | -   | 2   | -   | -   | -   | -  |
|     | 38100/28 | 28" Reinforcing Ring        | 1                 | -                 | -   | -   | -   | -   | -   | 2   | -   | -   | -  |
|     | 38100/30 | 30" Reinforcing Ring        | 1                 | -                 | -   | -   | -   | -   | -   | -   | 2   | -   | -  |
|     | 38100/32 | 32" Reinforcing Ring        | 1                 | -                 | -   | -   | -   | -   | -   | -   | -   | 2   | -  |
| 6   | 38416/25 | Marching Claw Hook          | 5                 | 16                | 16  | 20  | 20  | 20  | 20  | 20  | 20  | 20  | 20 |
| 7   | 901/01   | Bass Drum Carry Eye         | 3                 | 2                 | 2   | 2   | 2   | 2   | 2   | 2   | 2   | 2   | 2  |